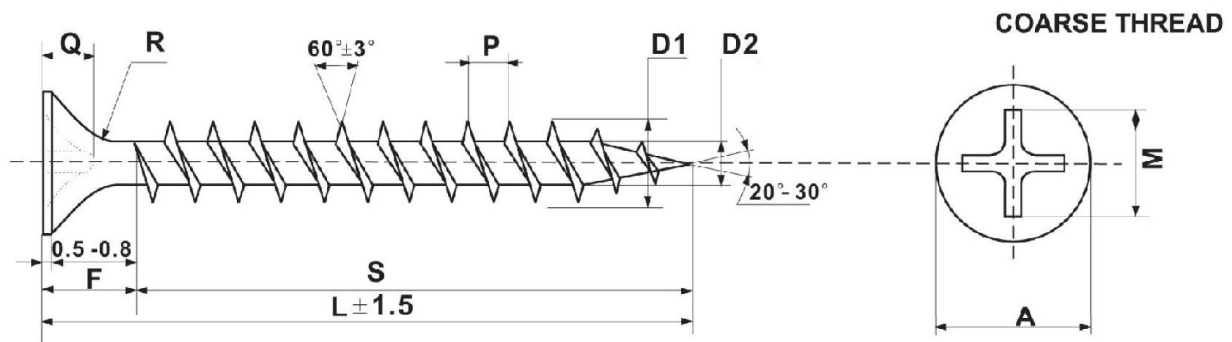
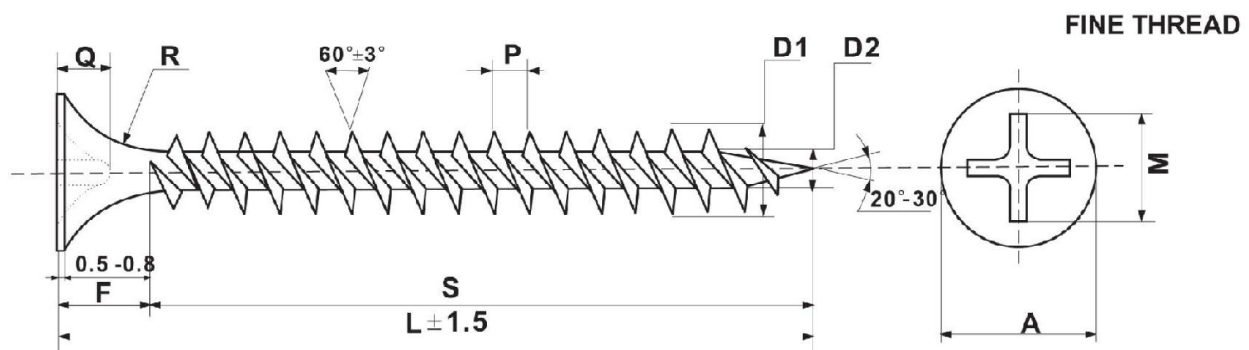


DRYWALL SCREW



- STANDARD: DIN, ANSI, BS
 - MATERIAL: STEEL C1022
 - HARDNESS OF CORE: 300-450 HV
 - HARDNESS OF SURFACE: 550-750 HV
 - FINISH: ZINC PLATED, PHOSPHATED
- | | | | | |
|--------|----------|----------|----------|-----------|
| GAUGE | #6 / 3.5 | #7 / 3.9 | #8 / 4.2 | #10 / 4.8 |
| LENGTH | 13-60 | 13-64 | 16-80 | 16-152 |

